

73 — P E E L — 75

STREET

West Melbourne



**FLEXIBLE OPEN-PLAN
FLOOR PLATES**



**FOUR (4) ON-SITE
CAR PARKS**

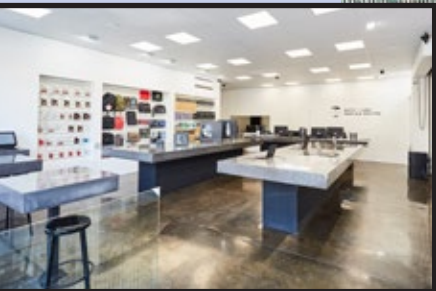
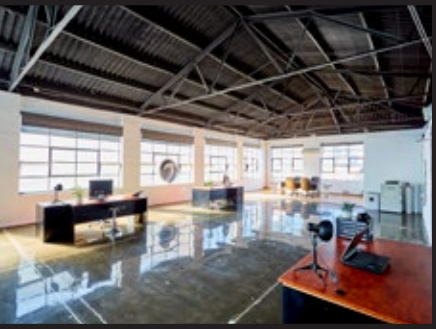


**UNINTERRUPTED
MELBOURNE
CBD VIEWS**



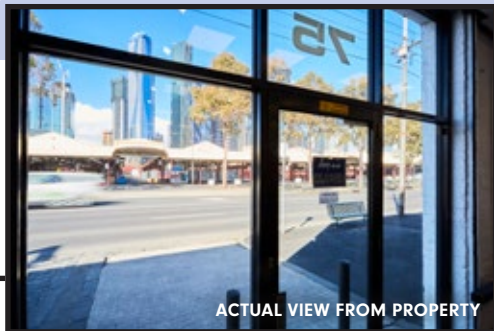
A STRIKING TWO-LEVEL BOUTIQUE OFFICE/RETAIL INNER CITY BUILDING

Open-plan configuration across **306sqm*** with multiple separate access points



Offered with **vacant possession** ready to occupy, invest or develop (STPA)

Directly opposite The Queen Victoria Market, walking distance to the Melbourne CBD and booming educational and medical precincts



ACTUAL VIEW FROM PROPERTY



Accessible by all forms of public transport including Peel & Victoria Street Trams and Flagstaff Train Station

Set to capitalise on both the **\$250 million redevelopment** of The Queen Victoria Market, and West Melbourne's ongoing residential and hotel development boom



FOR SALE VIA PUBLIC ON-SITE AUCTION FRIDAY 19TH OCTOBER 2018 AT 11.00AM

73—PEEL—75 STREET *West Melbourne*



RMIT UNIVERSITY

MELBOURNE CENTRAL

MELBOURNE CBD 340M*

Queen Victoria MARKET Since 1878



FLAGSTAFF TRAIN STATION 580M*



WILLIAM STREET

CHIMAC+

CAPEL STREET

CENTRAL CLUB HOTEL

VICTORIA STREET

PEEL STREET

LANEWAY

Nando's

LUKUMADES

The Drunken Robot

MAX RUTTNER
+61 425 799 942
max.ruttner@cbre.com.au

ALEX BRIERLEY
+61 447 974 447
alex.brierley@cbre.com.au

LEON MA 马海翔
+61 417 070 725
leon.ma@cbre.com.au

*Approximately. The information in this document is general in nature and is a guide only. It does not take into account your individual circumstances. Before acting you should check the accuracy of the information and seek your own independent financial and legal advice. The information must not be relied upon to make any investment decisions. The principal and its agent will not be liable for your failure to verify the information or seek appropriate advice.