

2 PREMIER EASTERN CORRIDOR RETAIL INVESTMENTS

1 118A-122 CANTERBURY ROAD
BLACKBURN SOUTH



2 26 & 28 MITCHELL STREET
DONCASTER EAST



3
Retail Shops

667
Land Area/sqm*

2
Frontages

Woolworths **BWS** McDonald's
Located Near

2
Retail Shops

129
Land Area/sqm*

3
Frontages

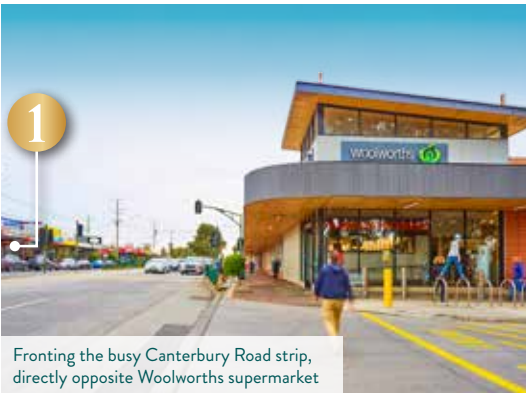
ALDI (Coming Soon) Dan Murphy's 
Located Near

3 UNDERUTILISED RETAIL SHOPS ON LARGE COMMERCIAL 1 ZONED LAND HOLDING
(MAJOR VALUE ADD POTENTIAL^)



BLACKBURN SOUTH
MEDIAN HOUSE PRICE
\$1,241,000*

**1 118A-122 CANTERBURY ROAD
BLACKBURN SOUTH**



Fronting the busy Canterbury Road strip, directly opposite Woolworths supermarket



2 FREEHOLD RETAIL SHOPS IN THE TIGHTLY HELD JACKSON COURT SHOPPING VILLAGE
(0% VACANCY!)*



**2 26 & 28 MITCHELL STREET
DONCASTER EAST**

DONCASTER
MEDIAN HOUSE PRICE
\$1,402,500*



Situated amongst major retailers including Dan Murphy's



Located in the tightly held Jackson Court retail village (0% vacancy*)

TO BE SOLD INDIVIDUALLY VIA PUBLIC ON-SITE AUCTIONS 20TH SEPTEMBER 2018 FROM 10.30AM

FOR MORE INFORMATION PLEASE CONTACT THE EXCLUSIVE SALES AND MARKETING AGENTS:

ROREY JAMES
+61 439 400 081
rorey.james@cbre.com.au

NIC HAGE
+61 448 782 594
nic.hage@cbre.com.au

JING JUN HENG 王敬君
+61 411 059 116
jj.heng@cbre.com.au

LEON MA 马海翔
+61 417 070 725
leon.ma@cbre.com.au

*Approximately. ^STCA The information in this document is general in nature and is a guide only. It does not take into account your individual circumstances. Before acting you should check the accuracy of the information and seek your own independent financial and legal advice. The information must not be relied upon to make any investment decisions. The principal and its agent will not be liable for your failure to verify the information or seek appropriate advice.